



GOOD MORNING
Have Good Trading Day

MONDAY



Price is what you pay.
Value is what you get.

- Warren Buffet



MARKET PLUSE

INDIAN INDICES

NAME	CMP	NET CH.	%
SENSEX	26220	+66	+0.25
NIFTY	7954	+2	+0.03

INDIAN ADR'S

SYMBOL	CLOSE	GAIN/ LOSS %
DRREDDY	64.15	+0.90
HDFCBANK	62.60	+1.08
ICICIBK	8.80	+2.68
INFY	18.89	Unch
TATAMOTOR	23.36	+4.61
WIPRO	12.19	+1.50

FII AND MF ACTIVITY

SYMBOL	In Crs.
FIIs Eq (Provisional)	48.60
FIIs Index Future	963.66
FIIs Index Options	22.81
FIIs Stock Future	-130.57
FIIs Stock Options	-20.06
DII's Eq (Provisional)	152.18

CURRENCY

RBI RATE	01-OCT-2015
RUPEE - \$	65.5540
EURO	73.0796
YEN 100	54.5400
GBP	99.1701

MARKET PLUSE

GLOBAL INDICES

NAME	CMP	NET CH.	%
DOW	16472	+200	+1.23
NASDAQ	4707	+80	+1.74
NIKKEI	17941	+216	+1.22
HANG SENG	21941	+434	+2.02
SGX NIFTY	8041	+82	+1.03

WORLD COMMODITIES

FUTURE	U\$\$	CHANGES
CRUDE	45.63	+0.09
NATURAL GAS	2.465	+0.014
GOLD	1137.5	+0.9
SILVER	15.235	-0.028
COPPER	2.3435	+0.0180

WORLD EVENTS

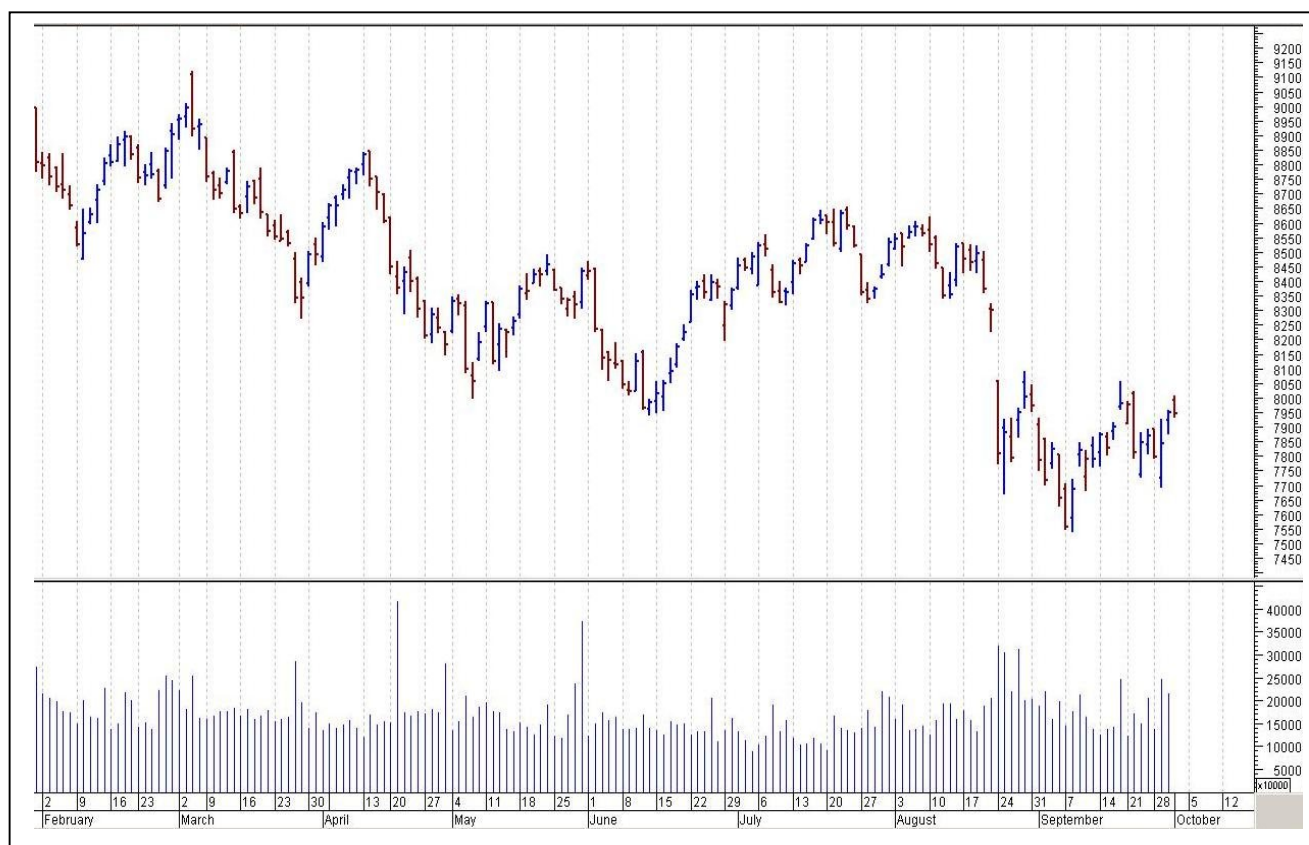
- US: ISM Non-Manufacturing PMI
- UK: Services PMI

TOP STORY

- Biocon -Acquires business assets of Vizag manufacturing unit of Acacia Life.
- IDBI Bank -Government exploring options to dilute stake in IDBI Bank
- September Auto Sales: Tata Motors: Total sales down 2 percent at 45,215 units (YoY). TVS Motor - Total sales down 1.7 percent at 2.32 lakh units (YoY). SML Isuzu -Total sales at 1,032 units versus 864 units (YoY).
- L&T Shipbuilding in MoU with Adani Ports to evaluate operations at Kattupalli port
- Adani Group to buy 2 power plants from Welspun Group for Rs 400 crore: ET
- NBCC bags orders worth Rs 277 crore in September
- Greenply Industries commences commercial production of UV coated panels at manufacturing unit at Pantnagar, Uttarakhand
- NTPC may sell power to Bangladesh from Assam plant



NIFTY CHART



MARKET COMMENTARY

Indian equity benchmarks, trimming most of their initial gains, ended Thursday's trade with marginal gains and extended their winning streak to third straight session. Markets made a gap-up opening supported by positive global sentiments but markets turned choppy as investors started booking profits at higher levels. There was some disappointment after growth in eight core sectors - coal, crude oil, natural gas, refinery products, fertilizer, steel, cement and electricity, slowed to 2.6% in August compared with 5.9% in the corresponding month last year as steel production shrank and coal output flattened. Sentiment was also tempered by data that showed the country's manufacturing activity in September slowed more than expected to a seven-month low. Nikkei/Market survey stated that India's manufacturing sector output slipped to a seven-month low of 51.2 in September, as order flow turned sluggish amid difficult economic climate. For today's trade Nifty likely to trade in the range between 7970 – 7990 in the upper side and 7930 – 7920 in the lower side.

MARKET LEVELS

	CMP	SUPPORT LEVELS				RESISTANCE LEVELS			
NIFTY	7950	7930	7920	7890	7850	7970	7990	8010	8040
USDINR	65.82	65.76	65.6	65.54	65.4	65.88	65.97	66.05	66.2



FUTURES CORNER

SCRIPS	CLOSE	SUPPORT	TARGET		REMARKS
		STOP LOSS	T1	T2	
TITAN	325.55	322	329	334	TRADING CALL
INDIACEM	82.15	81	84	85	TRADING CALL
ADANI PORTS	306.35	302	311	315	TRADING CALL

EQUITY CORNER

SCRIPS	CLOSE	SUPPORT	TARGET		REMARKS
		STOP LOSS	T1	T2	
RADICO	86.75	84	91	94	TRADING CALL
DELTACORP	79.8	77	82	84	TRADING CALL

DELIVERY BASED CALL / INVESTMENT CALL

SCRIPS	CMP	SUPPORT	TARGET		REMARK
		STOP LOSS	T1	T2	

BULK DEALS (BSE)

SCRIP	CLIENT NAME	BUY/SELL	QUANTITY	PRICE
ECLERX	FRANKLIN TEMPLETON MUTUAL FUND	B	250,000	1,575
CLARIS	BARCLAYS CAPITAL MAURITIUS LIMITED	S	770,914	201.28
CLARIS	RELIANCE MUTUAL FUND	B	625,000	201

BULK DEALS (NSE)

SCRIP	CLIENT NAME	BUY/SELL	QUANTITY	PRICE
VETO	INDIA MAX INVESTMENT FUND LTD	SELL	100000	75
CANDC	L AND T INFRASTRUCTURE FINANCE COMPANY LIMITED	SELL	154518	22.37

SCRIP'S IN F&O BAN

(To resume for normal trading below 80% of market wide limit required)

NIL



NIFTY 50 STOCKS: SUPPORT & RESISTANCE

Symbol	Close	Support 1	Support 2	Pivot Point	Resistance1	Resistance2
ACC	1363.10	1351.73	1340.37	1363.37	1374.73	1386.37
AMBUJACEM	209.95	207.50	205.05	209.25	211.70	213.45
ASIANPAINT	839.65	834.20	828.75	841.60	847.05	854.45
AXISBANK	496.25	490.28	484.32	496.87	502.83	509.42
BAJAJ-AUTO	2315.10	2290.35	2265.60	2308.85	2333.60	2352.10
BANKBARODA	181.10	179.17	177.23	182.43	184.37	187.63
BHARTIARTL	339.45	336.55	333.65	338.50	341.40	343.35
BHEL	199.35	196.07	192.78	201.78	205.07	210.78
BOSCHLTD	19306.40	19129.03	18951.67	19389.02	19566.38	19826.37
BPCL	855.10	845.25	835.40	854.85	864.70	874.30
CAIRN	153.20	151.77	150.33	153.58	155.02	156.83
CIPLA	633.55	627.00	620.45	638.00	644.55	655.55
COALINDIA	328.35	325.12	321.88	327.73	330.97	333.58
DRREDDY	4232.95	4198.63	4164.32	4224.32	4258.63	4284.32
GAIL	293.25	287.17	281.08	298.08	304.17	315.08
GRASIM	3529.15	3497.10	3465.05	3533.55	3565.60	3602.05
HCLTECH	857.05	823.00	788.95	868.90	902.95	948.85
HDFC	1196.60	1181.53	1166.47	1207.17	1222.23	1247.87
HDFCBANK	1067.65	1059.03	1050.42	1067.97	1076.58	1085.52
HEROMOTOCO	2412.05	2383.80	2355.55	2428.25	2456.50	2500.95
HINDALCO	70.90	70.07	69.23	71.08	71.92	72.93
HINDUNILVR	816.40	809.32	802.23	818.28	825.37	834.33
ICICIBANK	267.10	264.28	261.47	268.87	271.68	276.27
IDEA	150.00	146.97	143.93	150.38	153.42	156.83
INDUSINDBK	957.60	945.15	932.70	954.20	966.65	975.70
INFY	1173.05	1156.12	1139.18	1176.93	1193.87	1214.68
ITC	328.75	325.92	323.08	329.88	332.72	336.68
KOTAKBANK	640.85	634.40	627.95	644.45	650.90	660.95
LT	1490.10	1469.92	1449.73	1482.28	1502.47	1514.83
LUPIN	2108.85	2052.57	1996.28	2090.28	2146.57	2184.28
M&M	1250.05	1236.13	1222.22	1257.07	1270.98	1291.92
MARUTI	4580.35	4526.27	4472.18	4624.08	4678.17	4775.98
NMDC	93.90	93.18	92.47	93.82	94.53	95.17
NTPC	123.50	122.43	121.37	124.17	125.23	126.97
ONGC	232.35	228.90	225.45	231.45	234.90	237.45
PNB	132.45	131.18	129.92	133.02	134.28	136.12
POWERGRID	130.55	129.23	127.92	131.57	132.88	135.22
RELIANCE	864.70	857.55	850.40	865.75	872.90	881.10
SBIN	235.15	232.40	229.65	237.15	239.90	244.65
SUNPHARMA	891.00	877.83	864.67	886.42	899.58	908.17
TATAMOTORS	297.75	292.33	286.92	296.92	302.33	306.92
TATAPOWER	65.85	65.22	64.58	65.93	66.57	67.28
TATASTEEL	212.25	209.83	207.42	212.67	215.08	217.92
TCS	2644.60	2607.88	2571.17	2628.92	2665.63	2686.67
TECHM	563.00	544.53	526.07	555.52	573.98	584.97
ULTRACEMCO	2773.45	2701.80	2630.15	2740.65	2812.30	2851.15
VEDL	83.40	81.88	80.37	84.22	85.73	88.07
WIPRO	599.75	593.63	587.52	603.47	609.58	619.42
YESBANK	728.60	715.93	703.27	727.67	740.33	752.07
ZEEL	400.60	389.03	377.47	396.02	407.58	414.57



CORPORATE ACTION / BOARD MEETINGS

NSE Download Ref No :NSE/FAOP/3078:- Ajanta Pharmaceuticals Ltd to replace Aditya Birla Nuvo Ltd. In Nifty Midcap 50 Indexw.e.f October 19, 2015

NSE Download Ref No :NSE/FAOP/3083:- Adjustment of Futures and Options contracts in the security BATAINDIA. The adjusted strike price shall be arrived at by dividing the old strike price by the adjustment factor i.e.2. Market lot for October 2015 expiry will have a revised lot of 500 and November 2015 & December 2015 will have a revised lot of 1000 wef October 07, 2015

NSE Download Ref No :NSE/FAOP/3082:- Adjustment of Futures and Options contracts in the security CADILAHC. The adjusted strike price shall be arrived at by dividing the old strike price by the adjustment factor i.e.5. The revised market lot would be 1500 WEF October 06, 2015

BOARD MEETINGS

COMPANY NAME	DATE	PURPOSE	RS. PER SH.
CADILAHC	6-Oct-15	Face Value Split From Rs 5 To Re 1	
IL&FSTRANS	7-Oct-15	Rights 1:3 @ Premium Rs.80/- Per Share	
BATAINDIA	7-Oct-15	Face Value Split From Rs 10 Rs 5	
SHIVAMAUTO	8-Oct-15	Bonus 1: 1	
SEAMECLTD	8-Oct-15	Buyback	
SYMPHONY	15-Oct-15	Annual General Meeting/ Dividend	10
GILLETTE	15-Oct-15	Dividend	15
LAMBODHARA	15-Oct-15	Face Value Split From Rs 10 To Rs 5	
INFY	16-Oct-15	Dividend	
PGHH	19-Oct-15	Dividend	30.25
GUJSTATFIN	21-Oct-15	Annual General Meeting	
MINDTREE	21-Oct-15	Dividend	

NEWS & RUMOURS:

- Gold (Spot Dollar) major support = \$1083/\$1062 & Resistance = \$1137/\$1170.
- Crude oil range->\$41 to \$51.
- Wall Street slips as Apple falls, factory activity slows: - Wall Street started the last quarter of the year in the red on Thursday as Apple fell and investors parsed mixed U.S. data.
- U.S. Jobless Claims Are Near Decade Lows: - The number of Americans filing applications for unemployment benefits rose last week, maintaining a pattern of gains and losses around decade lows that signals firings remain muted.
- Consumer Comfort in U.S. Reaches Highest Level since Mid-July: - Consumers were more upbeat last week than at any time since mid-July as Americans held the most favorable views of the buying climate in three months.
- Egypt Signs Deal for Iraqi Oil: - Egypt has signed an agreement with a Kuwaiti energy firm to search for oil outside its own borders for the first time, an oil minister said Wednesday. The deal, reached with Kuwait Energy, leaves 10 percent of an area in Basra, southeast of Baghdad, Iraq, in the hands of Egypt, Middle East Monitor reported Thursday.
- Gold remains lower after robust U.S. jobs data: - Gold prices were trading at the lowest levels in more than two weeks on Thursday after data pointing to strong gains in U.S. private sector jobs growth last month underlined expectations for higher interest rates from the Federal Reserve.
- Natural gas backs off 5-month lows after storage data: - Natural gas futures eased back from five-month lows on Thursday after data showed that U.S. natural gas supplies increased less than expected last week.

TRENDS & OUTLOOK – DATE: 05- Oct- 2015

PRECIOUS METALS:

COMMDITY (MCX)	S2	S1	PIVOT POINT	R1	R2
GOLD (Dec)	25500	25720	26060	26310	26665
SILVER (Dec)	32700	33510	34700	36000	37272

BASE METALS

COMMDITY (MCX)	S2	S1	PIVOT POINT	R1	R2
COPPER (Nov)	327	333	341	348	354
ZINC (Oct)	105.10	108.30	111.65	114.10	116.55
LEAD (Oct)	103.30	105.60	108.70	111.75	114.10
NICKEL (Oct)	630	651	674	691	714

ENERGY

COMMDITY (MCX)	S2	S1	PIVOT POINT	R1	R2
CRUDE OIL (Oct)	2820	2901	3000	3099	3175
NATURAL GAS (Oct)	153	158	165	171	176

DATE TALKS : TODAY'S ECONOMIC DATA :

Services PMI of GBP, Eurogroup Meetings, Final Services PMI, ISM Non-Manufacturing PMI, Labor Market Conditions Index.



Registered Office

Indira House, 3rd Floor, 5 Topiwala Lane,
Opp. Lemington Road Police Station, Grant Road (East), Mumbai - 400007.

Corporate Office

'Ramavat House' E-15, Saket Nagar, Indore - 452018 (M.P.)

Customer Care

Tel: +91-731-4097170/ 71/ 72/ 73/ 74 M. +91 93031 72345

Email: customercare@indiratrade.com www.indiratrade.com



INSTITUTIONAL DEALING UNIT

Africa House, 5, Topiwalla Lane, Lamington Road, Mumbai, 400007

Tel: +91 22 30080678 Fax : +91 22 23870767 Email : ie@indiratrade.com

Disclaimer

This report is for private circulation within the Indira Group. This report is strictly confidential and for information of the selected recipient only and may not be altered in any way, transmitted to, copied or distributed, in part or in whole, to any other person or to the media or reproduced in any form. This report should not be construed as an offer or solicitation to buy or sell any securities or any interest in securities. It does not constitute a personal recommendation or take into account the particular investment objectives, financial situations, or any such factor. The information, opinions estimates and forecasts contained here have been obtained from, or are based upon, sources we believe to be reliable, but no representation of warranty, express or implied, is made by us to their accuracy or completeness. Opinions expressed are our current opinions as of the date appearing on this material only and are subject to change without notice.